



# A new approach for evaluating experienced assembly complexity based on Multi Expert-Multi Criteria Decision Making method

Elisa Verna<sup>1</sup> · Gianfranco Genta<sup>1</sup> · Maurizio Galetto<sup>1</sup>

Received: 5 July 2022 / Accepted: 23 January 2023 / Published online: 11 February 2023  
© The Author(s) 2023

## Abstract

In manufacturing, complexity is considered a key aspect that should be managed from the early phases of product and system design to improve performance, including productivity, efficiency, quality, and costs. The identification of suitable methods to assess complexity has always been of interest to researchers and practitioners. As complexity is affected by several aspects of different nature, it can be assessed from objective or subjective viewpoints or a combination of both. To assess experienced complexity, the analysis relies on the subjective evaluations given by practitioners, usually expressed on nominal or ordinal scales. However, methods found in the literature often violate the properties of the scales, potentially leading to bias in the results. This paper proposes a methodology based on the analysis of categorical data using the multi expert-multi criteria decision making method. A number of criteria are adopted to assess assembly complexity and, from subjective evaluations of operators, product assembly complexity is assessed at an individual level and then, aggregating results, at a global level. A comparison between experienced complexity and an objective assessment of complexity is also performed, highlighting similarities and differences. The assessment of experienced complexity is much more straightforward and less demanding than objective assessments. However, this study showed that it is preferable to use objective assessments for highly complex products as individuals do not discriminate between different complexity levels. An experimental campaign is conducted regarding a manual assembly of ball-and-stick products to show the applicability of the methodology and discuss the results.

**Keywords** Product complexity · Manual assembly · Categorical data · Quality

## 1 Introduction

Complexity of manufacturing products and systems has long been a subject of great interest by both researchers and practitioners. Recent studies have shown that complexity is one of the main factors impacting operator and manufacturing process performance, including assembly time, quality defects, and production costs (Ameri et al. 2008; Falck and Rosenqvist 2014; Alkan et al. 2018). In addition, complexity in assembly processes is not only related to performance and KPIs but also to the design of the workspace and equipment needed on the factory floor (Alkan et al. 2016; Sinha and Suh 2018). For this reason, assessing and managing the

different sources of complexity is essential for companies to achieve their competitiveness goals.

In the literature, complexity is defined and analyzed from several perspectives and, accordingly, methods to estimate complexity are manifold, as will be detailed in the following Sect. 2. Typically, assembly complexity involves objective and subjective perspectives. Objective aspects include product complexity and sequence complexity, whilst subjective aspects involve personal factors (training, creativity, experience, etc.) and operation and management strategy (Li and Wieringa 2000). Although objective assessment allows the assessment of actual sources of complexity, subjective complexity provides a more holistic view and offers a more situation-oriented understanding of the effects of complexity (Bystrom and Barfield 1999).

The relationship between objective and subjective complexity has been the subject of several studies, and has been analyzed both quantitatively and qualitatively (Li and Wieringa 2000; Mattsson 2013; Alkan 2019). The present study aims to define a relationship between operator-experienced

✉ Elisa Verna  
elisa.verna@polito.it

<sup>1</sup> Department of Management and Production Engineering,  
Politecnico di Torino, Corso Duca degli Abruzzi 24,  
10129 Turin, Italy

complexity and objective complexity, estimated using the structural model first proposed by Sinha et al. (2012), adopting the multi expert-multi criteria decision making method (Yager 1993). The methodology allows obtaining, starting from some assembly criteria, (1) an individual complexity assessment (at the level of the individual operator) and (2) an overall assessment of product complexity (aggregating the individual assessments). Unlike previous models proposed in the literature, the proposed approach differs in that it uses appropriate methods to analyze and manage categorical data (i.e. the evaluations provided by operators/practitioners). Indeed, very often, operations not admitted by ordinal/nominal scales, such as ratios between categorical data, are performed, thus violating scale properties, leading to a distortion in the results (Stevens 1946; Franceschini et al. 2004). This approach is applied to a manual assembly of products and related structural and experienced complexity are compared. In detail, the following Research Questions (RQs) are addressed:

- RQ1: Is there a statistically significant association between individual experienced complexity and objective complexity?
- RQ2: Does the variability of individual experienced complexity values remain constant as the objective complexity of products changes?
- RQ3: Is there a statistically significant association between overall experienced complexity and objective complexity?
- RQ4: On average, does each change in objective complexity result in a change in operators' perceived complexity?

The method used in the present study is easier to apply, immediate and less expensive than models that objectively assess complexity. Indeed, it does not require any parameter estimates and complex calculations, but instead involves collecting data and analysing the subjective evaluations provided by operators. The results emerging from this study show that this method is preferable for low and medium complexity levels, while it is less accurate than objective assessment for highly complex product since individuals struggle to discriminate between increasing levels of complexity.

The remainder of the paper is organized into five sections. Section 2 summarizes the main definitions of product complexity and approaches used to assess complexity. In Sect. 3, the methodology proposed to assess experienced assembly complexity is presented. Section 4 illustrates a case study concerning the practical application of the proposed methodology in a manual assembly process. Section 5 illustrates experimental results and discussions. Finally, Sect. 6 concludes the paper.

## 2 Theoretical background

This section reviews existing scientific definitions of product complexity from different perspectives and summarizes the main approaches used to assess complexity of manufacturing systems/products adopted by practitioners and researchers.

### 2.1 Defining product complexity

Several articles and reviews already exist addressing methods to assess and manage complexity in manufacturing (Simon 1991, 1996; De Toni et al. 2001; ElMaraghy and Urbanic 2004; Samy and ElMaraghy 2010; ElMaraghy et al. 2012; Liu and Li 2012; Efthymiou et al. 2016; Alkan et al. 2018). Herbert Simon (1996) defined complexity as the main problem of handling systems: “Roughly, by a complex system I mean one made up of a large number of parts that interacts in a non-simple way. In such systems the whole is more than the sum of the parts, not in an ultimate, metaphysical sense but in the important pragmatic sense that, given the properties of the parts and the laws of their interaction, it is not a trivial matter to infer the properties of the whole”. In the scientific literature, complexity is defined and modelled by authors both from a broad and a narrow standpoint. From the narrow sense, complexity is defined by the quantity, relationship, and variety of process elements. On the other hand, from the broader sense, any instinctive characteristic can be part of complexity. Three following perspectives of product complexity can be identified according to Liu and Li (2012): (1) structuralist, (2) resource requirement and (3) interaction. In the structuralist perspective, the complexity of a task is defined by its structure, e.g. it can be defined as a function of the number of task elements and the relationships between them. A complex task may have many task elements, and the task elements may be interconnected with each other. Models belonging to this perspective analyze systems through characteristics such as size, variety of components, architecture, and the amount and clarity of information, see e.g. Wood (1986), Rothrock et al. (2005), Ham et al. (2012) and Alkan and Harrison (2019). In the second perspective, the resource requirement, task complexity refers to the use of resources by operators, or other similar concepts in Human Information Processing (HIP), such as visual, auditory, cognitive, and psychomotor resources, knowledge, skills, and even time. The definition is based on the idea that task performers consume more resources the more complex the process becomes (Park 2009; Bedny

et al. 2012; Wickens and McCarley 2019). Such resources are attributable to the human sphere and relate to the understanding and processing of information. However, in addition to the knowledge and the visual, auditory and manual skills of the task performers, it is impossible to disregard the intrinsic attributes of the process which, growing in number, variety and uncertainty, increase the cognitive effort required. Finally, in the interaction perspective, task complexity is defined as a product of the interaction between the task and the characteristics of the task performer (e.g. idiosyncratic needs, prior knowledge and experience). Thus, according to the definition of complexity within this perspective, the same system, objectively complex, can be perceived differently. Researchers supporting this research line are concerned with subjective task complexity from the perspective of the task performers (Brown and Miller 2000; Greitzer 2005). According to this view, task complexity is a relative concept (Gonzalez et al. 2005).

Table 1 summarizes the main definitions of task complexity, as reported in the review of Liu and Li (2012), by categorizing them into the three perspectives, i.e. structuralist, interaction and resource requirement.

## 2.2 Methods for assessing assembly complexity

In the scientific literature, several methods have been adopted to assess product complexity in manufacturing. Most of these methods link product complexity, particularly in assembly processes, to the physical attributes of the products to be assembled or the process sequence for the assembly. In contrast, although manual assembly is a widespread preference, especially in high-wage countries, research on human cognition and information processing has not received sufficient attention from both industry and academia (Zaeh et al. 2009). Thus, the variables that influence the complexity of assembly tasks, and accordingly the associated performance, are not fully understood. In Table 2, the most common methods adopted by practitioners and researchers to assess the complexity of production systems/products are summarized, highlighting their benefits and limitations.

Table 2 highlights the many different methods developed in the literature for assessing the complexity of systems and products. From such an analysis, distinctive features emerge that are accordingly used by researchers to evaluate and manage complexity, also referred to as symptoms (Alkan

**Table 1** Main definitions of task complexity subdivided into the three perspectives of complexity [adapted from Liu and Li (2012)]

Task complexity definitions	Perspective
Number of elements	Structuralist
Number of information cues; information load; availability of information	
Number of goals	
Number of acts/meta-operations/procedures/sub-tasks	
Number of outcomes/products/outcome characteristics	
Number of solutions/paths/path-goal connections; path-goal multiplicity	
Number of alternatives and attributes in each alternative	
Variety/diversity of task elements	
Input rate; rate of change of information cues	
Relationship/connectivity/redundancy/conflict between task components	
Concurrency between tasks	
Ambiguity; clarity; specification; structuredness	
Dynamic; variability; random events	
Inconsistency; mismatch; compatibility	
Presentation heterogeneity	
Repetitiveness; novelty; non-routine	
Reliability/validity of information cues	
Time pressure	
Uncertainty	
Uncertainty	Interaction
Difficulty	
A priori determinability; unpredictability; confidence; analyzability; interpretability	Resource requirement
Familiarity	
Cognitive/physical demands	
Amount of knowledge	

**Table 2** Summary table reporting common methods to assess complexity in manufacturing, with indication of their pros and cons

Methods	Description	Objective/subjective complexity assessment	Pros	Cons
Methods for designing products using ease of assembly concept	Methods including Design for Assembly and Manufacture (DFMA) (Boothroyd and Alting 1992), the Lucas Method (Chan and Salustri 2003), and the Assembly Evaluation Method (AEM) developed at Hitachi, Ltd. (Miyakawa 1986)	Objective assessment	Such approaches aim at enhancing the product design by reducing part numbers, optimizing part handling and insertion attributes, penalizing inefficient design	Although these methods are useful in developing criteria and rules for assessing the complexity of assembly operations, they are not specifically designed to assess assembly complexity
Statistical methods based on design complexity criteria and time estimation methodologies	Statistical methods are commonly adopted to analyze assembly complexity and cause-effect relationships between task parameters and assembly errors. Hinckley (1994) defined an assembly complexity factor based on the Westinghouse DFA worksheet suggesting a theoretical time required to assemble a product. Shibata (2002) proposed to evaluate process complexity based on the method of Sony Standard Time (SST) and design complexity through the design for assembly/disassembly Cost-effectiveness (DAC) method. Su et al. (2010) adapted this latter method to suit the case of copier assembly. Fuji Xerox Standard Time was considered instead of Sony Standard Time and the time variation was integrated into the process complexity. In addition, the design complexity was derived from the weights and the degree of difficulty associated with 11 design parameters	Mainly objective assessment, sometimes combined with subjective expert evaluations, as in the method of Su et al. (2010) where process complexity factor is evaluated objectively, while design complexity factor using the AHP method based on surveys	These approaches provide a robust assessment of assembly complexity, enabling both objective (e.g., times) and subjective (e.g., surveys) assessments to be included	The methodologies used, being designed for specific assembly products, are tied to the individual assembly types and, accordingly, lack generalizability. For instance, Hinckley (1994) based his study on the Westinghouse Database, specifically designed for semiconductor products. Moreover, the DAC method used by Shibata as a measure of design assemblyability is Sony's methodology specific for audio equipment. Therefore, to extend the methodologies proposed by these authors to other contexts, it is necessary to adapt them to the specific case study, either by slightly modifying them or by identifying more suitable approaches (Galletto et al. 2020; Verna et al. 2022a)
Survey-based methods	Extensive research has shown that complexity may have a subjective nature and depend on the specific context and operator who perceives it (Lee 2003). Accordingly, survey-based methods are often adopted to assess the perceived level of complexity arising from human-system interactions and manufacturing systems (Falck et al. 2012, 2017a; Mattsson 2013; Alkan 2019)	Subjective assessment	Survey and questionnaire-based approaches are capable of understanding the perceived level of complexity, providing insights on how assembly complexity affects human performance and on potential improvements in existing systems	Survey-based methods are often considered limited in situations where there is no physical prototype, such as in early design phases. In addition, survey results are significantly dependent on the opinion of the respondents, thus making the process subjective

**Table 2** (continued)

Methods	Description	Objective/subjective complexity assessment	Pros	Cons
Methods based on relationships between system components and system elements	<p>Metrics to measure sources of task (or system) complexity based on relationships between system components (e.g., number of flow paths, travel distance) and system elements (e.g., number of components, setup time, cycle time, reliability). Physical (i.e. temperature, cleanliness, envelope, strength and dexterity) and cognitive elements (i.e. procedures, in-process relationships and performance issues) are used to calculate the relative effort of each manufacturing task to define an "<i>operational complexity index</i>" (ElMaraghy and Urbanic 2004). Such an index is designed as a function of the quantity and diversity of both product and process elements and the relative complexity coefficient which is introduced to capture the absolute information content. In a later study, Samy and ElMaraghy (2010) extended the approach mentioned above by adding DFA criteria to evaluate the assembly complexity of individual product parts. Besides, Richardson et al. (2006) proposed a practical model to predict the difficulty of assembly of an object based on its physical attributes. Zaeh et al. (2009) presented a multi-dimensional measure to assess the complexity of manual assembly operations extending the concept of Predetermined Time Standards (PTS). This measure includes several dimensions, including human performance, attention allocation and learning effects based on the product and its reference levels</p>	<p>Mainly objective assessment, sometimes including aspects related to individuals. For instance, in Zaeh et al. (2009), information regarding the mental as well as the physical state of the worker (e.g. receptiveness, mental workload and confidence) is integrated into the approach to assess task complexity</p>	<p>These methods assess elements of product and process complexity using methodologies commonly adopted in industry and thus are user-friendly for companies</p>	<p>Being designed for specific industrial applications, these methodologies cannot be directly extended to other manufacturing domains</p>

Table 2 (continued)

Methods	Description	Objective/subjective complexity assessment	Pros	Cons
Entropic measures for complexity	Models in which complexity is associated with uncertainty typical of operators' choices when faced with a manufacturing system or its components. In this context, uncertainty is measured through Shannon information entropy (Shannon 1948). The complexity, also referred to as "operator choice complexity" (Zhu et al. 2007), depends on both product variety and assembly process information. In such models, a human operator has to perform assembly operations in a certain manual assembly workstation in a mixed-model assembly line, involving various choices and selections. Assembly complexity is defined based on the uncertainty associated with assembly choices: the larger the choice complexity, the longer time required for the operator to make decisions in assembly operations. The total assembly complexity in a certain workstation is the sum of complexity of all assembly activities (Zhu et al. 2007; Wang et al. 2013)	Objective assessment	In the literature, entropic measures have been widely proposed for defining structural complexity (Zhang 2012) and operational complexity (Vrabić and Butala 2011; Wang et al. 2019)	Entropic measures are criticized for their high subjectivity in defining resource states, being tied to the level of detail, and for their costly evaluation steps that are especially true for investigations of dynamic complexity, i.e. the complexity associated with operational uncertainties (Samy and ElMaraghy 2010; Alkan and Harrison 2019)
Chaos and non-linear dynamics theory	These methods for quantitatively assessing assembly complexity of manufacturing systems adopt chaos and the theory of nonlinear dynamics (Massotte 1996; Wiendahl and Schefczyk 1999; Chryssolouris et al. 2004; Donner et al. 2008)	Objective assessment	These approaches are mainly used to assess manufacturing systems complexity, by providing a deep understanding of the underlying causes of task/system behaviors, predicting the effect of operating parameters on key performance indicators (KPIs), and illustrating system sensitivity (Efthymiou et al. 2016)	The main limitations of such approaches are the inability to capture and analyze stochastic events such as machine failures and often require huge datasets, making them expensive. In addition, they are sensitive to fluctuations in external factors such as measurement errors and noise (Efthymiou et al. 2016)



**Table 2** (continued)

Methods	Description	Objective/subjective complexity assessment	Pros	Cons
Heuristics-based methods	Heuristic-based methods attempt to provide an industrially intelligible picture of complexity based on the structure of the production system (Windt et al. 2008; Samy and ElMaraghy 2012; ElMaraghy et al. 2014)	Objective assessment	The main advantage of heuristic methods is the ease of application in real-world industrial systems and data collection. Furthermore, the strength is to allow comparison of design alternatives in the early phases of the life cycle to detect potential critical issues	These approaches provide limited insight into the complexity of the production system and are incapable of analyzing intricate structural patterns (Samy and ElMaraghy 2010). In addition, the applicability of heuristic approaches across different systems and applications is often limited since these metrics are strictly dependent on the specific industry domain or application for which they are designed

et al. 2018). These features may be categorized into four categories: (1) nonlinear behaviours of systems, which are linked to unstable dynamic phenomena, (2) uncertainties in the operational flow, (3) system physical situation (i.e. variety, quantity and information content of system elements and their interrelations), and (4) indicators of human perceptions. Furthermore, by analysing pros and cons of methods, it emerges that few studies have addressed the practical viability by companies, how they can be linked to specific industrial needs and how they can be related to the different phases of a production system engineering life cycle.

Determining both the available engineering data at a given life cycle stage and the appropriate complexity assessment method is challenging for companies to codify within rules or best practices, as this remains unclear and generates uncertainty during method selection. Consequently, the appropriate assessment method should be selected based on the available data, often aligned to a design/engineering phase. In Table 2, as it will be described in Sect. 2.3, both objective and subjective methods for assessing complexity are included. It is important to note that completely objective approaches to measuring complexity are not always feasible. Consequently, approaches such as surveys and questionnaires, while susceptible to the subjectivity of respondents, still offer valuable information if following a systematic approach. Therefore, this paper aims to formulate a rigorous approach to assessing complexity using a subjective perspective, which is then compared with a purely objective method to highlight its benefits and criticalities.

### 2.3 Objective versus subjective assessment of complexity

Task and product complexity have been interpreted by researchers and practitioners from both objective and subjective standpoints (Liu and Li 2012), as shown in Table 2. In the objective viewpoint, task complexity is directly related to task characteristics and is independent of task performers (Wood 1986). Conversely, the subjective interpretation considers task complexity as a combined property of task and task performer characteristics (Byström and Järvelin 1995; Vakkari 1999). Subjective complexity is also referred to in the literature as experienced, perceived, or psychological complexity. When the complexity of the task exceeds the performer's ability, the performer will perceive the complexity of the task. Thus, complexity sometimes becomes a "state of mind," which influences how the task performer executes the task (Liu and Li 2012; Mattsson 2013).

Referring to the three perspectives mentioned in Sect. 2.1 (see Table 1), in the structuralist and resource requirement perspectives, complexity is typically described as an objective characteristic of the process, while complexity is rather

defined as a subjective experience in the interactionist perspective.

Objective and subjective assessments of complexity have their strengths and weaknesses, which have been discussed or empirically analyzed by many researchers (Byström and Järvelin 1995; Maynard and Hakel 1997; Alkan 2019). The objective assessment is generally relatively specific, while the subjective one is relatively global (Schwab and Cummings 1976; Baccarini 1996; Byström 1999). Typically, authors argue that objective assessment provides a solid and rigorous basis for concise and standardized formulation, albeit it is difficult to be applied in complex and dynamic real-world situations. On the contrary, subjective assessment provides a more situation-bound understanding of the effect of task complexity and has practical implications because of availability; however, it mixes the effects of task, task performer and environment, resulting in a loss of generalization across tasks.

Although objective and subjective complexity seem to have unavoidable shortcomings and appear incompatible with each other, they are interdependent and complementary. First, there is a causal connection between them. The subjective complexity of the task depends on the objective complexity of the task, which is emphasized by several studies (Li and Wieringa 2000; Topi et al. 2005; Alkan 2019). Second, the formulation of subjective complexity should validate the objective assessment of complexity. Thus, an artificial division between objective and subjective complexity will result in an inconclusive and incomplete knowledge base (Cummings et al. 2010). Only by considering the objective and subjective complexity together, a greater understanding of the task and the relationship between the task and the task performer can be obtained.

At this point, the structural model for objective assessment of complexity (Sinha et al. 2012) is described in Sect. 2.3.1, while a detailed debate on the tension between subjective and objective complexity, which deepens the above discussion, is presented in Sect. 2.3.2.

### 2.3.1 Structural complexity model

In the scientific literature regarding product assembly complexity, a model addressing the assessment of complexity from an objective standpoint was firstly proposed by Sinha et al. (2012), and then used in several studies (Alkan et al. 2017; Alkan 2019; Verna et al. 2021a, b, 2022a). In such a model, the molecular orbital theory developed by Huckel (1932) is applied to the engineering domain to analyze the complexity of cyber-physical systems. The analogy behind the model is between the configuration energy of molecular systems and the complexity of engineering systems. In detail, in Huckel model, the configuration energy of atomic orbitals is expressed as a function of (1) self-energy of individual atoms in isolation,

(2) interaction energy between interconnecting atoms, and (3) effects of the topology of molecular system (Hückel 1932). In this context, the configuration energy delineates the distinctive ability of the interacting system to react to its environment, and higher values exhibit increasing effort needed to develop/manage the system. Similarly, a cyber-physical system can be represented by several components that are connected in different ways: each component can be thought of as an atom, and the interfaces between them as inter-atomic interactions, i.e. chemical bonds (Sinha et al. 2012). In this framework, product complexity can be associated with the intrinsic structure of the system and, thus, the individual entities in the system, their linkages, and the architectural structure of the system (Sinha 2014). This model was then adopted and validated in a number of subsequent studies to quantify complexity of industrial products, e.g., pressure recording devices, printing systems and wrapping machines (Sinha 2014; Alkan et al. 2017; Alkan and Harrison 2019; Verna et al. 2021b).

Assembly complexity is defined as (Sinha 2014; Alkan 2019):

$$C = C_1 + C_2 \cdot C_3. \quad (1)$$

The three components of the structural complexity,  $C_1$ ,  $C_2$  and  $C_3$ , are described below.

$C_1$  is defined as the handling complexity, and is the sum of complexities of individual product parts. It is calculated as shown in Eq. (2):

$$C_1 = \sum_{p=1}^N \gamma_p, \quad (2)$$

where  $N$  is the total number of product parts and  $\gamma_p$  is the handling complexity of part  $p$ . The parameter  $\gamma_p$  denotes the technical/ergonomic difficulty/effort associated with managing and interacting with the product part in an isolated condition, without requiring information about the system architecture. It is measured by the degree to which the part has physical characteristics that lead to difficulties or problems during its handling in manual and automated assembly operations. In previous studies,  $\gamma_p$  was estimated using different approaches, including a function of standard handling time (Alkan 2019) and an exponential function to derive a score from constituting elements of a part (Alkan and Harrison 2019), the so-called Lucas Method to derive a normalized handling index (Alkan et al. 2017).

$C_2$  represents the complexity of connections (or liaisons). It is the sum of the complexities of pair-wise connections existing in the product structure, as follows:

$$C_2 = \sum_{p=1}^{N-1} \sum_{r=p+1}^N \varphi_{pr} \cdot a_{pr}, \quad (3)$$



where  $\varphi_{pr}$  is the complexity in achieving a connection between parts  $p$  and  $r$ , and  $a_{pr}$  is the  $(p, r)$ th entry of the binary adjacency matrix  $\mathbf{AM}$  of the product.  $\mathbf{AM}$  is a symmetric matrix of size  $N \times N$  where each element designates the existence of an assembly liaison between two components. In detail,  $a_{pr}$  can assume two values as follows:

$$a_{pr} = \begin{cases} 1 & \text{if there is a connection between } p \text{ and } r \\ 0 & \text{otherwise} \end{cases} \quad (4)$$

The complexity  $\varphi_{pr}$  can be assessed by the standard completion time of the connection in isolated conditions (Alkan 2019), by a fraction of the connected component complexities depending on the nature of the connectivity (Alkan and Harrison 2019), or by the normalized fitting index from the Lucas Method (Alkan et al. 2017). Note that in Eq. (3), the connection between parts is considered only once.

Finally,  $C_3$  is the topological complexity and represents the complexity related to the architectural pattern of the assembled product. It can be obtained from the matrix energy  $E_{AM}$  of the adjacency matrix, which is designated by the sum of the corresponding singular values  $\delta_q$  (Nikiforov 2007; Sinha 2014), as follows:

$$C_3 = \frac{E_{AM}}{N} = \frac{\sum_{q=1}^N \delta_q}{N}, \quad (5)$$

where  $E_{AM}$  stands for graph energy (or matrix energy) and  $N$  stands for the number of parts (i.e. the number of nodes). As the adjacency matrix  $\mathbf{AM}$  is a symmetric matrix of size  $N \times N$  with the diagonal elements being all zeros, the singular values correspond to the absolute eigenvalues of the adjacency matrix (Li et al. 2012; Sinha 2014).

Matrix energy regimes for graphs with a given number of nodes can be divided into (1) hyperenergetic regime, (2) hypoenergetic regime and (3) intermediate or transition regime. The hyperenergetic regime is defined by graph energy greater than or equal to that of a fully connected graph, i.e.  $E_{AM} \geq 2(N - 1)$ , and the hypoenergetic regime is defined as  $E_{AM} < N$ . Consequently, the intermediate regime is defined as  $N \leq E_{AM} < 2(N - 1)$ . Hence, in terms of topological complexity metric, the regimes are defined as hyperenergetic when  $C_3 \geq 2(1 - 1/N)$ , hypoenergetic when  $C_3 < 1$ , and intermediate regime when  $1 \leq C_3 < 2(1 - 1/N)$ . Note that for hyperenergetic regimes,  $C_3$  can be approximated to 2 when  $N$  is sufficiently large. Translating the graph structures to system architectural patterns, hyperenergetic regimes are associated with distributed architectures, hypoenergetic regimes with centralized architectures, and intermediate regimes with hierarchical, or layered, architecture. Accordingly,  $C_3$  increases as the system topology shifts from centralized to more distributed architectures (Sinha 2014). Examples of real systems characterized by distributed architectures are printing systems and aircraft-gear turbofan

engines (Sinha 2014), while laptops have more centralised architectures as most components are connected to their base panel.

Therefore,  $C_3$  represents the intricateness of structural dependency among assembly and requires knowledge of the complete architecture of the system and, in this sense, contrary to the previous terms  $C_1$  and  $C_2$ , denotes a global effect whose influence could be perceived during the system integration phase (Sinha 2014). Therefore, the term  $C_2 \cdot C_3$  in Eq. (1) can be referred to as a general indicator of the system integration effort that allows distinguishing product architectures with similar parts and connections complexities.

### 2.3.2 Tension between objective and subjective assessment of complexity

As mentioned at the beginning of Sect. 2.3, objective and subjective assessments of complexity have elements in common while differing greatly in others. For these reasons, it can be argued that a tension exists between the two complexity paradigms, which has been explored and discussed in previous studies (Li and Wieringa 2000; ElMaraghy et al. 2012; Alkan et al. 2018).

In detail, the main differences that exist between objective and subjective complexity are that objective complexity is more standardized, while subjective complexity is situation-dependent, and objective complexity is rather specific, while subjective complexity can be considered more global. In addition, the two paradigms seem incompatible, but it is challenging to consider them together, not independently of each other. In Fig. 1, the conceptual framework for manual assembly complexity is represented. In this framework, both objective and subjective aspects are included. Objective aspects may be categorized into product complexity and sequence complexity, while subjective aspects belonging to human operators into personal factors (e.g. willingness, training, expertise, etc.) and operation and management strategy (Rouse and Rouse 1979; Li and Wieringa 2000; Alkan 2019).

As shown in Fig. 1, the objective perspective clearly links complexity to the characteristics of the process without taking into account the characteristics of performers. From this viewpoint, complexity is merely a process characteristic that can be measured. Contrarily, complexity is seen from a subjective standpoint as a union of performance and process features.

According to Liu and Li (2012), a performer begins to regard a process as complex when its intricacy exceeds his physical and/or mental capabilities. A human operator's perception of complexity during a manual assembly operation is defined similarly by Li and Wieringa (2000) as

a reflection of: (1) objective complexity made up of product- and sequence-related complexities; (2) personal characteristics like training, experience, creativity, and personal characteristics such as education, training, creativity, level of engagement, personal attributes, etc., and (3) the operation strategy developed through his own experience. According to Bystrom and Barfield (1999), a purely objective perspective of complexity is to be preferred since it allows an assessment of all actual sources and elements of complexity. On the other hand, some authors argue that a purely objective evaluation is hardly applicable to real industrial contexts such as manufacturing plants (Shibata 2002; Liu and Li 2012; Verna et al. 2022b). Indeed, proponents of subjective complexity believe that subjective complexity offers a more situation-oriented understanding of the effects of complexity and provides a more comprehensive vision (Bystrom and Barfield 1999). Notwithstanding, it is more difficult to identify and analyze the effects of all the factors that may influence complexity.

Figuring out which approach, objective or subjective or a mix of the two, to use in assessing complexity is not a trivial issue. Often this choice is dictated by production-driving factors. For example, if engineers want to determine the complexity of a product in the early stages of design, thus in the absence of a prototype, subjective approaches are not applicable. Conversely, if a general method that can apply to different types of production is needed, then objective approaches fail as they are designed for specific applications.

The tension between objective and subjective complexity has been addressed in several studies, often at the qualitative level (Li and Wieringa 2000; Mattsson 2013). The relation between the two perspectives was addressed quantitatively by Alkan (2019). The study results showed a superlinear relation described by a sigmoid function between subjective and objective product complexity. In detail, after a stagnation point, perceived complexity reaches saturation and thus products with increasing objective complexities can no longer be distinguished by operators. The study points out that behind the relationship between subjective and objective complexity also lies the issue that subjective complexity assessment may underestimate the actual complexity that can be described by objective complexity. Likewise, there could be situations in which the evaluation of subjective complexity may overestimate the objective complexity. Despite this initial effort in modelling a relationship between objective and subjective complexity, the method proposed by Alkan (2019) does not properly manage and analyze data on operators' perceived complexities. Indeed, perceived complexity values defined using a five-levels ordinal scale [Green (1), Green–Yellow (2), Yellow (3), Yellow–Red (4), Red (5)] are then normalized between 0 and 1 for developing a non-linear regression model with objective complexity. Thus, information initially provided on the ordinal scale is

arbitrarily interpreted and utilized on a quantitative scale with different properties from the first one. In other words, the original ordinal scale is transformed into a new cardinal scale characterized by metric and integer number composition properties. This arbitrary “promotion” of the scale properties brings about a series of problems in the perceived complexity interpretation. In more detail, the data numbering involves the definition of the perceived complexity on a formally broader scale than the original one, which generates a fictitious increase in its resolution. The numbering, acknowledging “metrological properties” higher than actually possessed by collected information, can therefore cause a “distortion” effect, which can partially or entirely distort the contents (Franceschini and Rossetto 2002, 2007).

In light of these remarks, the present study aims to further investigate the relationship between experienced assembly complexity and product complexity by proposing a new methodology to assess subjective complexity appropriately handling ordinal data gathered from interviews with operators. This approach may contribute to a better understanding of cause-and-effect relationships between the two different complexity perspectives. The comparison between experienced and objective assessment of complexity, highlighting similarities and differences, may also allow guidelines to be given to practitioners on when it is preferable to use one paradigm rather than the other for complexity assessment.

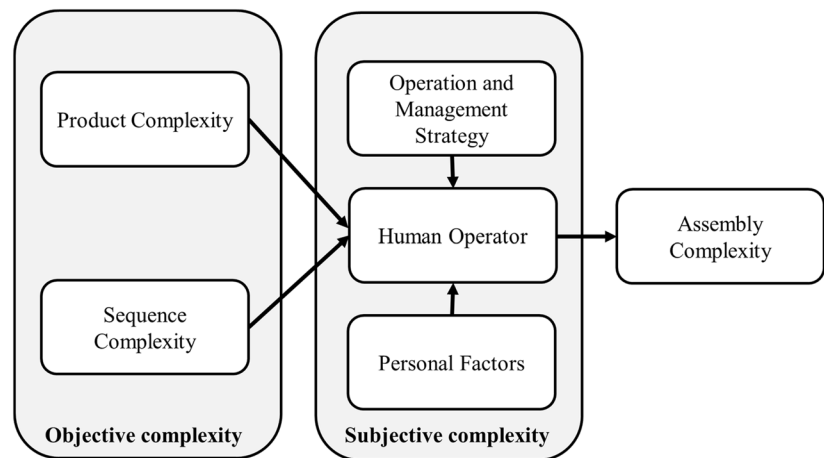
### 3 Method to assess experienced assembly complexity

As mentioned in Sect. 2, experienced (or perceived) assembly complexity is strictly related to the operator's capability to understand, manage and carry out the assembly to be performed. As a consequence, it is different from objective complexity, which is instead an intrinsic property of the system (Alkan et al. 2018). In light of this, a product, or more in general, an engineering system, can be perceived as more complex than its actual complexity by an operator without technological knowledge, experience and/or adequate equipment (ElMaraghy et al. 2012). Experienced assembly complexity may be affected by multiple factors, including the objective complexity of the system, the operator's training, experience, creativity, degree of involvement, and distinctive individual traits (Li and Wieringa 2000).

In this study, experienced assembly complexity is assessed at two different levels as follows: (1) individual operators' level and (2) global level, by averaging individual operators' assessments.

An overall scheme of the methodology proposed in this study is illustrated in Fig. 2.

**Fig. 1** Conceptual framework for manual assembly complexity (Li and Wieringa 2000; Alkan 2019)



In the proposed methodology, it is deliberately chosen not to include cognitive-related aspects of the operators and their ability to handle a certain level of complexity (e.g., skills, training level, cultural and organisational factors, knowledge and willingness) to make the method as general as possible and applicable in different production contexts. Nevertheless, these cognitive-related aspects open research questions that need to be addressed in future research.

### 3.1 Assessment at individual operators' level

Regarding the first level, individual experienced assembly complexity is assessed through subjective evaluations of operators regarding a number  $i = 1, \dots, 16$  of criteria, assigned on an ordinal scale ranging from 1 to 5. The criteria used to distinguish manual assembly operations in terms of complexity are taken from the study of Falck et al. (2017a), in which the authors aimed at demonstrating that proactive criteria assessment enables the prevention of costly assembly errors and the creation of sustainable and cost-efficient assembly conditions even in the early stages of production (Falck et al. 2017a). The list of 16 criteria and the corresponding interpretation is given in Table 3. Such criteria are slightly modified from the list proposed by Falck et al. (2017a) to better suit the case study that will be described in the next Sect. 4.

It should be noted that although some criteria seem similar, e.g. criteria 1 and 9, they differ substantially. Criterion 1 concerns whether the operator can look for better ways to speed up assembly or avoid problems during operations. Indeed, to save time and avoid mistakes, operators may be inclined to invent and use their strategies to perform tasks. On the other hand, criterion 9, refers to the order in which each step of the assembly process is performed. It should also be noted that the complexity criteria presented in this paper are not necessarily a full list of all existing criteria, but they are a comprehensive set of criteria intended to provide

an overall assessment of the experienced complexity of individuals, as it was demonstrated in different manufacturing sectors (Falck et al. 2016, 2017b) and will be experimentally demonstrated in Sect. 4.

Once the criteria have been formulated, the procedure requires that each operator  $k$  assigns, for a specific product  $j$ , an importance to each criterion  $i$ , i.e.  $I_{ijk}$ , depending on how relevant he considers the specific criterion to be for low product complexity. In addition to importance, each operator  $k$  was asked to express a degree of accordance with each criterion  $i$  in relation to the assembled product  $j$ , i.e.  $V_{ijk}$ . In both cases, five-level ordinal scales were used, which are summarized in Table 4. The importance of each criterion  $I_{ijk}$  has therefore a different meaning from the degree of accordance  $V_{ijk}$  for a given scale level, although they are expressed on an ordinal scale with the same levels to ensure uniformity in operators' responses. As an example, for an operator  $k$ , a specific criterion may be deemed negligible for a simple assembly (such as criterion 14 regarding the intuitiveness of assembly), and therefore assigned  $L_1$ —Negligible for  $I_{ijk}$ . However, the same operator may fully agree that the product can be assembled without instructions, and thus assigning  $L_5$ —Totally agree for  $V_{ijk}$ .

Ordinal scales, often linguistic, differ from cardinal scales as the concept of distance is not defined and their sole property is ordering (Agresti 2003). Although numerical conversion of verbal information simplifies subsequent analyses, it gives rise to two very significant problems: (1) numerical coding implies the introduction of a distance between the levels of the scale, and (2) the choice of a specific numerical coding over another may result in a change in the results obtained. Since a specific encoding may result in a misrepresentation of the original information, a correct approach could rely exclusively on the properties of ordinal scales. For this reason, the proposed approach avoids going through an artificial conversion into cardinal scales and improperly using synthesis operators for measuring position

and dispersion, i.e. arithmetic mean and standard deviation, respectively (Franceschini et al. 2005, 2007).

Then, the evaluations on the importance and accordance degree of the 16 criteria provided by operators are combined to provide a first estimation of the experienced product complexity at the level of individual evaluator. In order to deal with linguistic ordinal scales, Yager's multi expert-multi criteria decision making (ME-MCDM) method is adopted as synthesis approach (Yager 1993). Such a method was originally developed to integrate expert opinions expressed on linguistic scales, often vague and difficult to estimate (Yager 1995; Noor-E-Alam et al. 2011). The fields of application are various, ranging from service design to evaluation of risk priorities in manufacturing (Franceschini and Galetto 2001; Barravecchia et al. 2018). This method is adopted in the proposed approach to combine weighted partial accordance degrees assessed on the 16 complexity criteria. Authors decided to use such a method, instead of alternative approaches, e.g. Analytic Hierarchy Process (Saaty 2008), because in the early design phases, the process engineer is usually unable to provide evaluations on a ratio scale. On the other hand, an artificial promotion of data, originally given on ordinal scales, into ratings given on ratio scales could lead to a distortion of the final results (Stevens 1946; Franceschini et al. 2004).

The method addresses the general problem of aggregating individual operator evaluations to obtain an overall synthetic linguistic value (Yager 1993). It involves maximum, minimum and negation operators to combine linguistic information provided for non-equally important criteria. The underlying logic of Yager's ME-MCDM method is that, while low-importance criteria should marginally affect the overall aggregated value, highly important criteria should significantly contribute to the definition of the aggregated evaluation. In the proposed approach, the aggregated evaluation of

a certain product  $j$  expressed by the operator  $k$  ( $E_{jk}$ ) can then be calculated, by adopting a fuzzy logic, as follows:

$$E_{jk} = \text{Min}_i [\text{Max} \{ \text{Neg}(I_{ijk}), V_{ijk} \} ], \quad (6)$$

being  $\text{Neg}(L_x) = L_{t-x+1}$  the negation of  $L_x$ , with  $L_x$  the  $x$ th level of the scale and  $t$  the number of scale levels, i.e. 5 in this case. For instance,  $\text{Neg}(L_5) = L_1$  and  $\text{Neg}(L_4) = L_2$ .

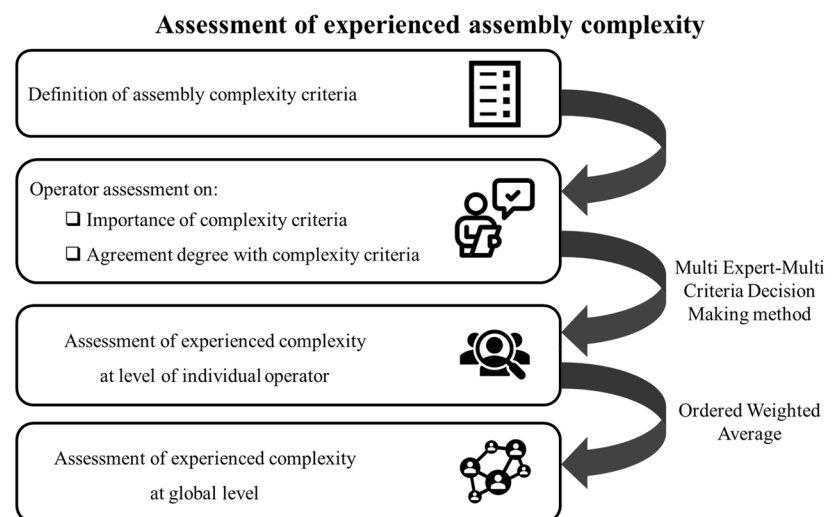
The aggregated evaluations obtained by Eq. (6) are values expressed on a five-scale level, where the lowest level represents high complexity and the highest level corresponds to low complexity, as the criteria listed in Table 3 are low-complexity criteria. Accordingly, to derive the final indicator of the individual experienced complexity of a certain product  $j$  expressed by the operator  $k$  ( $IEC_{jk}$ ), where the lowest level of the scale corresponds to low complexity, a negation of the scale is performed, according to Eq. (7):

$$IEC_{jk} = t - E_{jk} + 1. \quad (7)$$

Table 5 reports the five-level ordinal scale of resulting individual experienced complexity.

Thus, following the proposed aggregation method, given a certain product  $j$ , if an operator  $k$  were to assign all criteria the level  $L_5$ —"Indispensable" for importance and  $L_5$ —"Totally agree" for agreement, then the individual experienced complexity  $IEC_{jk}$  would be  $L_1$ —"Low", considering the product extremely simple and believing that all criteria are essential for a simple assembly. Conversely, if the operator assigned  $L_5$ —"Indispensable" for all criteria importance and  $L_1$ —"Totally disagree" for agreement degrees, then his individual experienced complexity would be  $L_5$ —"High", since he considers the product extremely complex and believes that all criteria are essential for a simple assembly. A different case would be if the operator assigned  $L_1$ —"Totally disagree" for agreement degrees but deemed

**Fig. 2** Schematic of the methodology for assessing experienced complexity of assembly



**Table 3** Complexity criteria of manual assembly, adapted from Falck et al. (2017a) to suit the ball-and-stick case study (described in Sect. 4)

Criterion <i>i</i>	Assembly low-complexity criterion	Description
1	There are only one (or few) strategies to perform the assembly	If it is possible to assemble the parts/perform the task correctly in different ways, the complexity is high. Otherwise, if there is a standardized (accepted) way to do the task, the complexity is low
2	Few parts to assemble; it is possible to work with pre-assembled blocks, i.e. in a modular way	If there are few details to mount, a small number of part operations, preassembly, and module solution (integrated assembly), the complexity is low. Otherwise, if there are many individual details and part operations, the complexity is high
3	Assembly of components is easy and fast (no time-consuming operations)	If the solutions are easy and quick to assemble (non-time demanding) the complexity is low. Otherwise, if there are time-demanding operations, the complexity is high
4	The assembly position of the parts/components is clear (immediate understanding of where to place parts inside the structure)	If there is a clear mounting position of parts and components the complexity is low, otherwise the complexity is high
5	Accessibility to the structure is good during assembly	If there is good accessibility to the structure (i.e., sufficient access for hands/tools), the complexity is low, otherwise, the complexity is high
6	Fully visible operations (operations do not require orienting the assembly for better visibility)	If the assembly involves visible operations (i.e., in the field of view when directly looking at the structure) the complexity is low, otherwise, the complexity is high
7	Handling the structure is easy from an ergonomic point of view	If there are good ergonomics conditions implying no risk of harmful impact on operators the complexity is low, otherwise the complexity is high
8	The operator does not have to make any cognitive effort or adopt any strategy during assembly	If operations do not require cognitive effort and strategy to be properly done, the complexity is low, otherwise, the complexity is high
9	Assembly can be done without following a precise order (independence of assembly order)	If operations may be done without following a precise order, i.e., are independent of assembly order, the complexity is low. Otherwise, if operations must be done in a certain order/sequence, the complexity is high
10	Intermediate checks during assembly are not required to assess the quality and correctness of the structure (no getting lost during the assembly of the structure)	If intermediate checks during assembly are not required to assess the quality and correctness of the structure, the complexity is low. Otherwise, if visual inspection, i.e. careful subjective assessment of the quality output, the complexity is high
11	Operations do not require precision, accuracy and attention	If tasks are not precision-demanding and no careful fitting is necessary, the complexity is low. Otherwise, the complexity is high
12	No need to make adjustments (due to errors or inaccuracies)	If no adjustments are needed due to errors or inaccuracies, the complexity is low. Otherwise, the complexity is high
13	Components remain stable and do not need to be moved (adjusted) to insert new parts	If components remain stable and do not need to be moved (adjusted) to insert new parts during assembly, the complexity is low. Otherwise, the complexity is high
14	No need for detailed instructions, i.e. the operator can proceed intuitively (no need to rotate the 3D instruction image several times during assembly)	If there is no need for detailed instructions, i.e. the operator can proceed intuitively, without rotating the 3D instruction image several times during assembly, the complexity is low. Otherwise, the complexity is high
15	The structure is strong and compact, so it does not change size or deform when manipulated and moved	If the structure is strong and compact and does not change size or deform when manipulated and moved, the complexity is low. If the structure changes shape or form during assembly because of soft and flexible material, the complexity is high
16	There is immediate feedback on correct assembly	If there is immediate feedback of proper installation e.g. by a clear click sound and/or compliance with reference points, the complexity is low. Otherwise, the complexity is high



all criteria negligible, thus providing  $L_1$ —“Negligible” for importance. In such a case, the procedure leads to obtain  $L_1$ —“Low” for the individual experienced complexity.

Figure 3 illustrates an operational scheme of the proposed procedure for a generic product  $j$ . In the scheme, for the sake of simplicity, only two operators are considered, namely A and B. For each product  $j$ , low-assembly complexity criteria are contained in the middle of the scheme, the upper part of the scheme reports the importance of assembly low-complexity criteria ( $I_{ijk}$ ), the degrees of accordance with the criteria ( $V_{ijk}$ ) are in the bottom part, while an assessment of the individual experienced complexity ( $IEC_{jk}$ ) can be found in the right part of the scheme.

To exemplify the proposed methodology, a pedagogical example is proposed in “[Pedagogical example to derive product experienced complexity at level of individual operator](#)” section of the “[Appendix](#)”.

### 3.2 Assessment at global level

Regarding the second level of the analysis, aimed at obtaining an overall value of experienced complexity of a product  $j$  ( $EC_j$ ) from the individual assessments, a sort of averaging of judgments is performed, without violating the properties of the ordinal scale. This synthetic measure of overall operator opinion allows designers to make decisions based on an “average” rating. Thus, the global experienced complexity is proposed as a practical indicator to synthesize individual values, although the authors are aware that any synthesis, useful and practical as it may be, inevitably results in the loss of part of the initial information (Franceschini et al. 2019). In detail, the operator Ordered Weighted Average (OWA), firstly introduced by Yager and Filev (Yager 1993; Filev and Yager 1994), is used, as defined below:

$$OWA = \text{Max}_{k=1}^n [\text{Min}\{Q(k), b_k\}], \quad (8)$$

where

- $Q(k) = L_{f(k)} (k = 1, 2, \dots, n)$  is the average linguistic quantifier (the weights of the OWA operator), with  $f(k) = \text{Int}\left\{1 + \left[k \frac{t-1}{n}\right]\right\}$ .  
 $L_{f(k)}$  is the  $f(k)$ th level of the linguistic scale (for example,  $L_{f(k)} = L_1$  if  $f(k) = 1$ ).
- $\text{Int}(a)$  is a function that gives the integer closest to  $a$ .
- $t$  is the number of scale levels (5 in this case).
- $n$  is the sample size.
- $b_k$  is the  $k$ th element of the sample previously ordered in decreasing order (i.e. the  $IEC_{jk}$  values in this case).

This operator is an emulator of the arithmetic mean which can take values only in the set of levels of the original ordinal scale, thus avoiding the problems of numerical codification of ordinal scale levels. Accordingly, from individual experienced complexity evaluations ( $IEC_{jk}$ ), an overall evaluation is derived, for each product  $j$ , by implementing Eq. (8):

$$EC_j = \text{Max}_{k=1}^n [\text{Min}\{Q(k), IEC_{jk}\}] \quad (9)$$

A pedagogical example is provided in “[Pedagogical example to derive product experienced complexity at global level](#)” section of the “[Appendix](#)” to illustrate and clarify how the experienced complexity at global level can be obtained by OWA operator.

### 3.3 Analysis of experienced complexity at individual operators and global levels

In this section, the methodologies adopted to analyze the experienced complexity values at level of individual operator and global level, i.e. aggregating individual operators’ values, are described. In detail, the obtained values of complexity derived as discussed in the previous Sects. 3.1 and 3.2 can be compared with objective assessment of product complexity, using the structural complexity model described in Sect. 2.3.1.

Regarding the first level of the analysis, the relationship between objective assessment of complexity and individual experienced complexity of products can be modeled using Ordinal Logistic Regression (OLR), as experienced complexity is an ordinal response defined using a linguistic scale (McCullagh 1980). OLR, also called ordinal logit or proportional odds model, is an ordinal regression model that only applies to data that meet the proportional odds assumption. Furthermore, the coefficients in the linear combination are not estimated using ordinary least squares, but rather by maximum likelihood, computed by using iteratively reweighted least squares (McCullagh 1980). To analyze and interpret the key results of the OLR, two steps should

**Table 4** Scale levels and semantic meanings for the assessment of product low-complexity criteria importance ( $I_{ijk}$ ) and accordance degree with the criteria ( $V_{ijk}$ )

Scale level	Importance	Scale level	Accordance degree
$L_1$	Negligible	$L_1$	Totally disagree
$L_2$	Preferable	$L_2$	Disagree
$L_3$	Important	$L_3$	Relatively agree
$L_4$	Very important	$L_4$	Agree
$L_5$	Indispensable	$L_5$	Totally agree

**Table 5** Scale levels and semantic meanings for the assessment of individual experienced complexity ( $IEC_{jk}$ )

Scale level	Individual experienced complexity
$L_1$	Low
$L_2$	Medium–low
$L_3$	Medium
$L_4$	Medium–high
$L_5$	High

be followed, as described below (Agresti 2003; Powers and Xie 2008).

1. Analyze the association between the response (individual experienced complexity) and the term (structural complexity)

If the  $p$ -value for the term is lower than the significance level selected, the association between the response and the term is statistically significant. Furthermore, OLR estimates a coefficient for each term in the model. The constant coefficients, in combination with the coefficients for the term, form a series of binary regression equations. The first equation estimates the probability of the first event occurring. The second equation estimates the probability that the first or second event will occur, and so on. The coefficients are useful for determining whether a change in the predictor variable makes any of the events more or less likely. Positive coefficients make the first event and the events that are closer to it more likely as the predictor increases. Negative coefficients make the last event and the events closer to it more likely as the predictor increases.

In OLR, odd ratios are also provided. The odds ratio compares the odds of two events. The odds of an event

are the probability that the event occurs divided by the probability that the event does not occur. For continuous predictors, odds ratios that are greater than 1 indicate that the first event and the events closer to the first event are more likely as the predictor increases. Odds ratios that are less than 1 indicate that the last event and the events that are closer to it are more likely as the predictor increases.

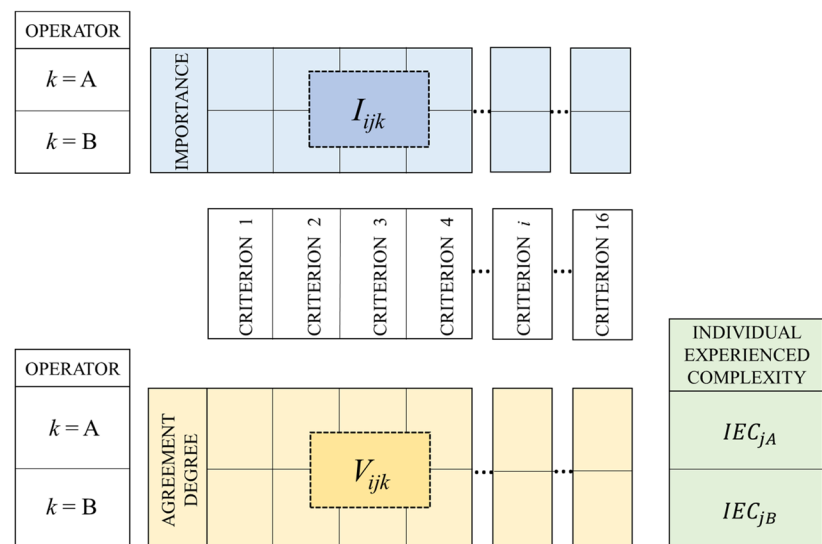
2. Determine how well the model fits the data

A model obtained by ordinal logistic regression fits the data well if the  $p$ -values for the *Goodness-of-Fit Tests* are greater than the significance level. This condition indicates that there is insufficient evidence to state that the model does not fit the data adequately. In addition, the *measures of association* should be examined. Higher values reveal a better predictive capacity. In particular, the Somers' D, Goodman and Kruskal indices vary between  $-1$  and  $1$ . Kendall's index generally ranges between  $-2/3$  and  $2/3$ . Values close to  $0$ , in all cases, reveal that the model does not have predictive ability.

In addition to OLR, also the methods described below for analyzing data at global level may be used.

Regarding the second level of the analysis, the relationship between objective assessment of complexity and experienced complexity at global level of products can be analyzed by means of Analysis of Variance (ANOVA) and measures of association suitable for categorical data. OLR cannot be used because no replicates are present. When only a continuous predictor is used in the analysis, the one-way ANOVA may be performed by flipping the model, so that the predictor variable is the experienced complexity, while the outcome variable is the continuous variable, i.e. objective complexity (Agresti 2003; Powers and Xie 2008). Furthermore, nonparametric measures of

**Fig. 3** Operational scheme of the proposed approach to derive individual experienced complexity of a product  $j$  ( $IEC_{jk}$ ) by two operators ( $k=A, B$ ) from importance of assembly low-complexity criteria ( $I_{ijk}$ ) and accordance degree with the criteria ( $V_{ijk}$ )



association may be used to assess the strength and direction of the association that exists between the continuous and the ordinal variable, e.g. Spearman rank-order correlation coefficient and Kendall's coefficient of rank correlation (Agresti 2003).

## 4 Experimental case study

In this section, an experimental case study is considered in which the proposed methodology to assess experienced assembly complexity is applied, and then the obtained results are compared with an objective assessment of complexity.

In the experimentation, assembled products used to assess experienced complexity and then compare it with objective complexity based on structural paradigm are molecular structures assembled using balls and sticks. In the scientific literature, such molecular structures are widely recognized as reference objects to emulate the corresponding real cyber-physical products by using atoms as product's constituent parts and bonds as connections (Sinha 2014; Alkan et al. 2017; Alkan 2019; Alkan and Harrison 2019). Connections emulated by bonds can be of different types, such as physical/mechanical connections, material/fluid flow, energy flow, and information/control signal flow (Sinha 2014). Ball-and-stick structure assembly is mainly a construction activity, entailing the elaboration of visual and/or geometric information and the ability to assemble a certain structure. Thus, choosing such structures is dictated by both (1) minimizing the confounding effects that would occur in real productions, such as dynamic and organizational issues of engineering systems, and (2) performing experimental tests by isolating and controlling the effects of product complexity.

Twelve different ball-and-stick structures (see Fig. 4 and Table 6) with different levels of product structural complexity were selected and built using some molecular modeling kits (Orbit™ by 3B Scientific®) based on clear 2D and 3D work instructions.

The assembly experiments were scheduled for 8 days, involving in total 52 assembly operators. In detail, on each day, at most 7 operators were involved in product assembly, supported by a quality controller who monitored the work. The assembly operators were students of the course “Quality Engineering” in the 2nd year of the Master of Science in Management Engineering program at Politecnico di Torino (Italy), with no previous experience in industrial assembly. Each operator had to assemble all 12 molecular structures, randomly assigned. The molecule assembly operations did not follow a particular assembly sequence to minimize the effects of sequence complexity. The models consisted of different atoms (i.e. balls) and bonds (i.e. sticks), in the quantities specified in Table 6. As for atoms, five different types were involved: carbon (grey), hydrogen (white), nitrogen

(blue), oxygen (red), and sulfur (yellow). As for connections, two types of chemical bonds were included, namely single covalent bonds made using rigid connectors and double covalent bonds made using flexible connectors. Each type of atom and connector was placed in a specific box (see Fig. 5), where the operator selected the corresponding part following the 2D and 3D assembly instructions provided.

## 5 Results and discussion

For each of the molecular structures, the structural complexity  $C$  was calculated, according to the model proposed in Sect. 2.3.1. Part and connection complexities were estimated from the average time acquired from preliminary experiments performed by the operators by randomizing the tasks to minimize learning effects. In detail, the average handling time, i.e. the time to locate the box, move the arm to pick position, pick the relevant atom and return the arm to work position, was used to estimate part complexity  $\gamma_p$ , see Eq. 2. The average completion time of a connection between a pair of atoms in isolated conditions was used to estimate connection complexity  $\varphi_{pr}$ , see Eq. 3. Such a time includes the handling of the connector and atoms, and the joining process, i.e. (a) locating the connection holes, (b) orienting and positioning the atoms and bond, (c) connecting the bond to both atoms, (d) arranging the connection, and (e) a final inspection. Each operator took three measurements of times, resulting in an average handling time of individual atoms of 2.80 s, an average connection time using a rigid connector of 8.95 s and using a flexible connector of 9.75 s. After normalizing average times based on the longest time, the following complexities were derived:  $\gamma_p = 0.29$ ,  $\varphi_{pr} = 0.92$  for rigid connections and  $\varphi_{pr} = 1.00$  for flexible connections. Thus, according to Eqs. (1), (2), (3) and (5), respectively, complexities of parts, complexity of connections, topological complexity and overall structural complexity for each structure were obtained, as listed in Table 6.

Before the operators carried out the assembly of the 12 structures throughout the workday, some preliminary information was given, and some simple assemblies of structures (other than those being experimentally tested) were proposed. Then, the 52 operators were asked to fill in one-time the importances related to each of the 16 criteria listed in Table 3 ( $I_{ijk}$ ) according to the evaluation scale provided in Table 4. After the assembly of each structure, the operator had to assess the degree of agreement with respect to each criterion ( $V_{ijk}$ ) according to the scale levels listed in Table 4. Thus, in total, 52 importance evaluations for each criterion were obtained, and 52 degrees of agreement were collected for each criterion related to each of the 12 structures. In Table 7, an extract of the evaluations provided by operators for structure ID 1 is shown.

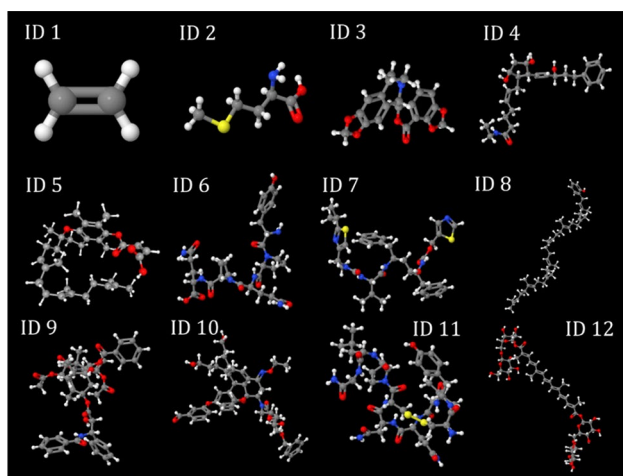
To evaluate if the 16 criteria selected for the analysis compose a suitable set to assess complexity, a correlation analysis was performed, using Spearman's coefficient since the agreements are expressed on ordinal scale. In the correlation table, provided in Table 8 in “Additional results on the experimental case study” section of the “Appendix”, all the correlation coefficients are positive, indicating a positive relationship between the criteria, since are all formulated to assess low complexity. Such a result confirms that the assessments were given consistently. All correlation coefficients are between 0.447 (between criterion 1 and 9) and 0.815 (between criterion 7 and 15), and there are no correlations very close to 1, which would justify the elimination of some criteria as redundant. Also, using the Principal Component Analysis (PCA), which aims at determining the

minimum number of principal components that account for most of the variation in the data (Johnson and Wichern 2014), it is obtained that all the criteria are equally important to represent experienced complexity and that all are necessary to explain the variation in the data. See for more details Figs. 6 and 7 in “Additional results on the experimental case study” section of the “Appendix”.

The evaluations are then aggregated by Eqs. (6) and (7) to obtain the individual experienced complexity at level of individual evaluator  $k$ , for a certain product  $j$  ( $IEC_{jk}$ ). For instance, for the assessment provided in Table 7, the values obtained are  $L_3$  (medium product experienced complexity) for operator A and  $L_1$  (low product experienced complexity) for operator B (Table 8).

Individual experienced complexity levels are analyzed using OLR, as described in Sect. 3.3. In Table 9, the logistic regression table is reported.

As shown in Table 9, there is a statistically significant association between the experienced complexity and the objective complexity since the  $p$ -value associated with the predictor is less than the significance level of 5%, and also since the  $p$ -value for the test that all slopes are zero is less than 0.05 (i.e.  $<0.0005$ ). Thus, changes in product complexity are associated with changes in the probabilities that the different individual experienced complexity perceived by operators occur. Since structural complexity is a continuous predictor, the *odds ratio* of 0.97 indicates that as  $C$  increases, the last event and those close to it, i.e. high levels of individual experienced complexity, become more likely. The negative coefficient associated with the structural complexity confirms this result since the last event and those close to it are more likely as individual experienced complexity increases. In addition, the  $p$ -value of goodness-of-fit tests is



**Fig. 4** Ball-and-sticks molecular structures used in the experiments (ID 1–ID 12), detailed in Table 6

**Table 6** Structural characteristics and complexity of the molecular structures used in the experiments (calculated according to the model described in Sect. 2.3.1)

ID	Molecular formula	Number of atoms	Number of bonds	Single bonds	Double bonds	$E_{AM}$	$C_1$	$C_2$	$C_3$	$C$
1	$C_2H_4$	6	5	4	1	6.00	1.66	4.82	1.00	6.48
2	$C_2H_{11}NO_2S$	20	19	18	1	20.95	5.54	18.18	1.05	24.58
3	$C_2H_{17}NO_6$	44	49	42	7	52.41	12.18	47.09	1.19	68.27
4	$C_{25}H_{37}NO_4$	67	68	62	6	75.85	18.54	65.19	1.13	92.34
5	$C_{33}H_{46}O_5$	84	85	76	9	89.79	23.25	81.55	1.07	110.42
6	$C_{29}H_{41}N_7O_9$	86	88	78	10	97.74	23.80	84.46	1.14	119.80
7	$C_{37}H_{48}N_6O_5S_2$	98	101	88	13	111.46	27.12	97.01	1.14	137.45
8	$C_{46}H_{70}O$	117	117	106	11	123.29	32.38	112.19	1.05	150.61
9	$C_{47}H_{51}NO_{14}$	113	119	103	16	130.25	31.28	114.33	1.15	163.05
10	$C_{50}H_{64}N_2O_{12}$	128	133	119	14	145.73	35.43	127.60	1.14	180.70
11	$C_{43}H_{66}N_{12}O_{12}S_2$	135	137	123	14	151.33	37.36	131.42	1.12	184.68
12	$C_{44}H_{64}O_{24}$	132	135	126	9	151.58	36.53	129.28	1.15	184.99



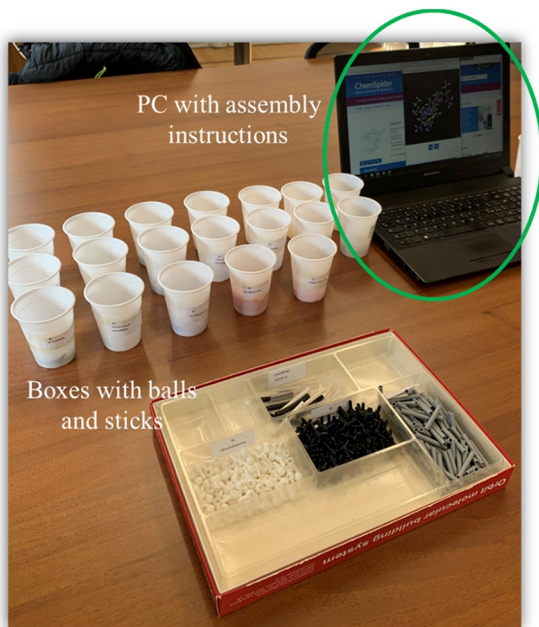
greater than 0.05, not providing evidence that the model is inadequate.

Considering the measures of association reported in Table 10, high values of Somers' D, Goodman–Kruskal gamma, and Kendall's tau-a indicate that the model has good predictive ability.

Thus, in responding to the first research question RQ1 (reported in Sect. 1), the following finding is obtained:

**Finding 1** A statistically significant association exists between individual experienced complexity and objective complexity.

This finding is in line with the previous study proposed by Alkan (2019), in which a sigmoid function between product complexity and perceived complexity was derived.



**Fig. 5** Assembly workstation

**Table 7** Evaluations on product low-complexity criteria importance ( $I_{ijk}$ ) and agreement degree ( $V_{ijk}$ ) obtained by two operators (A and B) for the structure ID 1 and final experienced complexity at level of individual evaluator

	Criterion															
	1	2	3	4	5	6	7	8	9	10	11	12	13	14	15	16
<i>Importance</i>																
Operator A	$L_4$	$L_5$	$L_5$	$L_4$	$L_4$	$L_5$	$L_4$	$L_3$	$L_3$	$L_3$	$L_4$	$L_4$	$L_4$	$L_3$	$L_4$	$L_4$
Operator B	$L_2$	$L_5$	$L_4$	$L_5$	$L_4$	$L_5$	$L_5$	$L_2$	$L_4$	$L_4$	$L_2$	$L_2$	$L_4$	$L_4$	$L_5$	$L_3$
<i>Agreement degree</i>																
Operator A	$L_5$	$L_5$	$L_5$	$L_5$	$L_3$	$L_5$	$L_5$	$L_5$	$L_5$	$L_4$	$L_5$	$L_5$	$L_5$	$L_5$	$L_5$	$L_5$
Operator B	$L_5$	$L_5$	$L_5$	$L_5$	$L_5$	$L_5$	$L_5$	$L_5$	$L_5$	$L_5$	$L_5$	$L_5$	$L_5$	$L_5$	$L_5$	$L_5$
<i>Experienced complexity</i>																
Operator A	$L_3$															
Operator B	$L_1$															

Furthermore, a one-way ANOVA is performed. In the interval plot illustrated in Fig. 6, it is evident that the means of objective complexity calculated for each level of experienced complexity are statistically different, since the 95% confidence intervals for the means do not overlap. Also, using the Tukey Method, all differences between means are statistically significant at 95% confidence level. Moreover, the Spearman rank-order correlation coefficient is 0.663 with a  $p$ -value  $< 0.0005$ .

It has to be noted from Fig. 6 that variability in results appears to be low for structures with low and high structural complexity, while for molecular structures with intermediate structural complexity, human perception of product complexity varies greatly. Accordingly, in relation to the research question RQ2 (as per Sect. 1), the following finding is identified:

**Finding 2** The variability in individual experienced complexity values does not remain constant as the objective complexity of the products varies as it is lower for low and high objective complexities and higher for intermediate complexities.

This novel finding, not analyzed in previous studies, is not trivial. These differences in the experienced complexity of structures with intermediate complexity are plausibly caused by several factors that distinguish operators, including their skills, training, cultural factors, etc. Therefore, further investigation will need to be conducted by including in the analysis variables related to cognitive aspects of individuals.

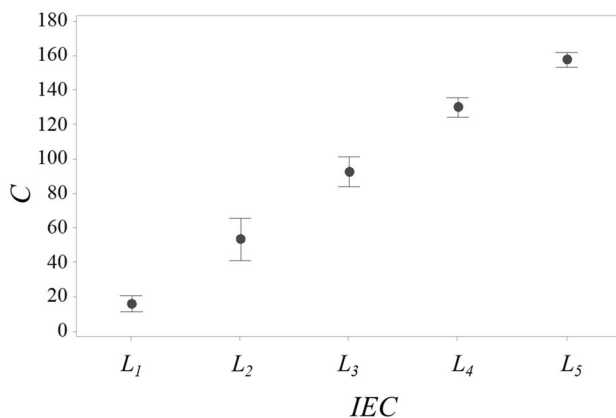
According to Eq. (9), all the obtained experienced complexity at level of individual operator are aggregated using the OWA operator to derive an overall assessment of complexity of each molecular structure. Results are illustrated in Fig. 7, where global experienced complexity is related to objective complexity of structures (see Table 6). Note that in the last point (i.e.,  $C = 181$  and  $EC = L_4$ ), two molecular structures (ID 11 and ID 12) are conflated.



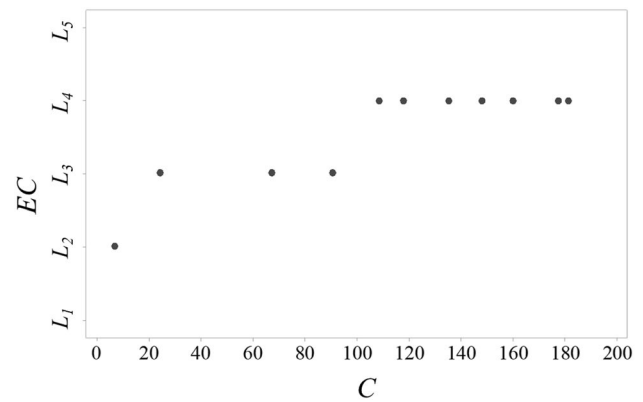
As shown in Fig. 7, as structural (objective) complexity increases, overall experienced complexity also tends to increase. However, from structure ID 5, operators attribute, on average, the medium–high level of complexity to all molecular structures, perceiving them to be equally complex. This result is reasonable as beyond a certain level the human operator cannot distinguish different levels of complexity. The threshold at which levels of objective complexity are indistinguishable by individuals may vary across individuals since it is linked to the operator's ability to understand and manage the assembly operation under consideration. Thus, cognitive-related factors such as cultural and organizational factors, level of experience, skills and knowledge of operators, may result in shifts at the threshold. These cognitive aspects and their effect on that threshold need to be further investigated in future research.

Results at global level are analyzed using one-way ANOVA and measures of association. The ANOVA table is provided in Table 11.

From the ANOVA, since  $p$ -value is less than the significance level of 5%, the null hypothesis that all means of structural complexity for the three values of overall experienced complexity are equal is rejected. To determine whether the mean difference between specific pairs of groups is statistically significant the Tukey Method is adopted (Montgomery et al. 2009). From such a test, it is highlighted that two groups can be distinguished: a first group containing experienced complexity at level  $L_4$ , and a second group containing levels  $L_3$  and  $L_2$ . In detail, the difference between means of objective complexity of structures with assigned experienced complexity  $L_3$  and  $L_2$  is not statistically different at 95% confidence level. On the contrary, the means of objective complexities with  $L_4$  and  $L_2$ , and  $L_4$  and  $L_3$  levels of experienced complexity are significantly different. Accordingly, for less complex



**Fig. 6** Interval plot of structural complexity ( $C$ ) versus individual experienced complexity ( $IEC$ ) representing mean value and 95% confidence interval of each level of  $IEC$



**Fig. 7** Overall experienced complexity ( $EC$ ) versus structural complexity ( $C$ ) for the 12 molecular structures used in the experiments

structures (with  $C$  less than 95), there is no significant difference from the perspective of experienced complexity since operators, on average, are unable to distinguish between low-medium ( $L_2$ ) and medium ( $L_3$ ) complexity. On the other hand, operators, on average, distinguish well between molecules with medium–low ( $L_2$ ) and medium–high ( $L_4$ ) complexity, and between those with medium ( $L_3$ ) and medium–high ( $L_4$ ) complexity. It should be highlighted that overall experienced complexity with levels  $L_1$  and  $L_5$  are not obtained since the OWA operator tends to flatten the results, not assigning the minimum and maximum levels of the scale unless (almost) all individual evaluations agree (Franceschini et al. 2004). Finally, the Spearman rank-order correlation coefficient is 0.832 with a  $p$ -value of 0.001.

In light of these results, the following findings answer, respectively, to the research questions RQ3 and RQ4 (reported in Sect. 1):

**Finding 3** A statistically significant association exists between global experienced complexity and objective complexity.

**Finding 4** On average, variations in objective complexity do not result in a change in perceived complexity by operators:

- After a certain threshold, operators do not distinguish between different levels of objective complexity;
- No significant difference is evidenced between structures with experienced medium–low complexity and medium complexity.

*Finding 3* reflects what has been obtained in previous studies relating subjective and objective complexity (Alkan 2019), as mentioned above in *Finding 1*. Also *Finding 4(a)* finds evidence in previous studies, where it

**Table 8** Logistic regression table (Powers and Xie 2008)

Predictor	Coef	SE Coef	<i>p</i> -value	Odds ratio	95% confidence interval	
					Lower	Upper
Const (1)	− 0.038	0.192	0.842			
Const (2)	1.090	0.185	< 0.0005			
Const (3)	2.890	0.222	< 0.0005			
Const (4)	5.338	0.286	< 0.0005			
<i>C</i>	− 0.033	0.002	< 0.0005	0.968	0.964	0.971

**Table 9** Measures of association between individual experienced complexity and predicted probabilities (Powers and Xie 2008)

Pairs	Number	Percent	Summary measures	
Concordant	109,453	77.0	Somers' D	0.62
Discordant	21,614	15.2	Goodman–Kruskal Gamma	0.67
Ties	11,083	7.8	Kendall's Tau-a	0.45
Total	142,150	100.0		

was observed that assemblers start to perceive the assembly operations as complex when the product complexity reaches a stagnation point (Alkan 2019). As future work, this threshold (or stagnation point) will need to be modelled in a multidimensional way considering aspects ranging from personal to operations management strategies. Finally, *Finding 4(b)* represents a novelty compared to previous studies and highlights that further investigation is needed to explain such differences in individuals' perceptions.

## 6 Conclusions

Complexity in manufacturing plays a pivotal role since if not correctly managed may reduce company performance in terms of productivity, efficiency, costs and quality.

Manufacturing complexity involves many aspects, including objective features, e.g. product complexity and sequence complexity, and subjective features, e.g. operator factors and operation/management strategy. Models adopted in the literature and by practitioners to assess

manufacturing complexity are manifold and may consider only some or all aspects of complexity.

Subjective assessments of complexity are based on the analysis of operators' evaluations, which are typically defined on nominal/ordinal scales. Accordingly, the scale in which experienced complexity is defined is typically an ordinal scale (e.g., typical levels are low complexity, medium complexity, high complexity, etc.). On the other hand, objective assessment of complexity relies on product/process characteristics, such as the number of parts and connections, assembly sequence, etc.

Identifying a relationship between experienced complexity and objective complexity may be of great assistance to production and design engineers to enhance the production process and related performance measures. Although in the literature some attempts to model the relationship between the different perspectives (objective and subjective) have been made, methods often violate the properties of the ordinal scales, potentially leading to distortion in the results.

The present paper proposes a structured methodology to assess the experienced complexity of a manual assembly starting from 16 assembly complexity criteria. Evaluation of the importance and agreement degrees on such criteria are aggregated using the multi expert-multi criteria decision making method. As a result, experienced complexity is obtained from two different levels: (1) at the level of individual operator, and (2) at an overall level, aggregating all individual complexity assessments. The proposed approach and related data analysis only rely on the use of synthesis operators and statistical tools suitable for categorical data, representing a novelty with respect to

**Table 10** ANOVA table for overall experienced complexity

Source	Degrees of freedom	Sum of squares (SS)	Contribution (%)	Adj SS	<i>p</i> -value
Overall experienced complexity	2	31,011	79.39	15,505.7	0.001
Error	9	8049	20.61	894.4	
Total	11	39,061	100.00		

**Table 11** Simple example of calculation of experienced complexity for a generic product  $j$  by operator  $k$ , considering 3 low-complexity criteria ( $i = 1, 2, 3$ )

	Criterion 1	Criterion 2	Criterion 3
Importance ( $I_{ijk}$ )	$L_5$	$L_4$	$L_3$
Accordance degree ( $V_{ijk}$ )	$L_2$	$L_4$	$L_5$
$\text{Max}\{\text{Neg}(I_{ijk}), V_{ijk}\}$	$\text{Max}[L_1, L_2] = L_2$	$\text{Max}[L_2, L_4] = L_4$	$\text{Max}[L_3, L_5] = L_5$
$E_{jk}$ [by Eq. (6)]	$\text{Min}(L_2, L_4, L_5) = L_2$		
$IEC_{jk}$ [by Eq. (7)]	$L_4$ (medium–high complexity)		

methods assessing experienced complexity used in previous studies.

Results obtained in an experimental campaign in which assembly of molecular structures was performed showed that a statistically significant association exists between the individual experienced complexity and the objective complexity (answer to RQ1), and that as structural complexity increases, high levels of individual experienced complexity become more likely. This result is in line with previous studies conducted in the field in which a sigmoid function relationship was derived between perceived and objective complexity (Alkan 2019). On the other hand, the results propose new and original insights with regard to the variability of individual data. Indeed, at individual level, variability in experience complexity appears to be low for structures with low and high structural complexity, while is more pronounced for molecular structures with intermediate structural complexity (answer to RQ2). These results may be attributed to differences in the ability of operators to handle a certain level of complexity and cognitive aspects (e.g., training, knowledge, cultural and organizational factors), which need to be investigated in future works. At global level, results showed that a statistically significant association exists between the overall experienced complexity and the objective complexity (answer to RQ3). Moreover, in response to RQ4, it was observed that, from a certain level of structural complexity, operators no longer perceive differences in complexity, in line with the results obtained in previous works (Alkan 2019). Instead, the original results that emerge by analyzing the global complexity values are that there is no significant difference between structures with experienced medium–low complexity and medium complexity. Differences in the perception of different levels of complexity and the threshold at which levels of objective complexity are indistinguishable for individuals are related to cognitive factors, such as cultural and organizational factors, level of experience, skills and knowledge of practitioners. Consequently, these aspects require further consideration in future research.

Engineers may adopt such results to understand experienced complexity in real production environments to minimize experienced complexity and the point at which the operator fails to discriminate between different levels of

complexity to ensure alignment between experienced and objective complexity. To this aim, future works will have to investigate whether operator assistance systems and methods, such as augmented reality applications and collaborative systems using cobots could be used to reduce the subjects' perception of complexity. Preliminary studies in this direction have been proposed by Gervasi et al. (2022), but require further investigation. In addition, discerning experienced complexity from actual product complexity may affect the design and analysis of assembly operations and may increase the accuracy of predictions of performance measures such as costs, defects, productivity, and learning effects.

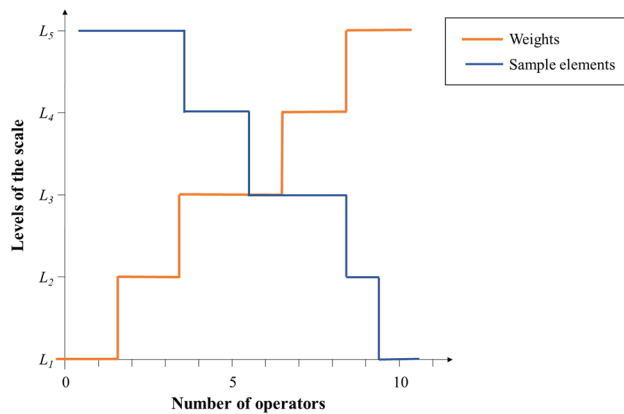
Assessing product complexity using questionnaires and evaluations provided by operators is undoubtedly much more straightforward and less costly than objectively assessing complexity, as in the case of the structural complexity model. However, this study showed that using experienced complexity to assess product complexity is appropriate for products with low and medium complexity, but not for high levels of complexity. Indeed, moving towards very complex products, it would be more appropriate to use complexity models based exclusively on objective data, as the operator cannot discern between different complexity levels.

Finally, the authors will apply the proposed approach to a real production environment and test if the obtained results can be extended to industrial products. Real-world assembly operations may require more cognitive and planning effort than ball-and-stick molecular assembly. Accordingly, the same level of product complexity may be experienced as even more complex by the operator. Thus, it is even more crucial that high levels of product complexity should be identified and minimized in the real world to reduce the experience complexity.

## Appendix

### Pedagogical example to derive product experienced complexity at level of individual operator

Consider a generic product  $j$  and a generic operator  $k$ . For the sake of simplicity, only three low-complexity criteria are considered, i.e. criteria 1, 2 and 3. Table 12 reports the evaluations on the importance and degree of accordance provided by the



**Fig. 8** Graphical representation of the overall experienced complexity calculation by the OWA operator. Adapted from Franceschini et al. (2005)

operator, respectively  $I_{ijk}$  and  $V_{ijk}$ . In the table, the results of the steps described in Sect. 3.1 are reported, as well as the final value of experience complexity at level of individual operator. In such an example, the product  $j$  is classified as medium-high complex.

### Pedagogical example to derive product experienced complexity at global level

Consider a generic product  $j$ , the scale with  $t=5$  levels, namely  $L_1, L_2, L_3, L_4$  and  $L_5$ , i.e. the levels of the scale of experienced complexity given in Table 5, and a sample of size of  $n=10$

operators, whose elements, previously ordered in decreasing order, are  $\{L_5, L_5, L_5, L_4, L_4, L_3, L_3, L_3, L_2, L_1\}$ .

The weights of the OWA operator are as follows:

- $Q(1)=L_1$ ;
- $Q(2)=Q(3)=L_2$ ;
- $Q(4)=Q(5)=Q(6)=L_3$ ;
- $Q(7)=Q(8)=L_4$ ;
- $Q(9)=Q(10)=L_5$ .

The following result is obtained, by implementing Eq. (9):

$$\begin{aligned} \text{OWA} = \text{Max} [ & \text{Min}\{L_1, L_5\}, \text{Min}\{L_2, L_5\}, \text{Min}\{L_2, L_5\}, \\ & \text{Min}\{L_3, L_4\}, \text{Min}\{L_3, L_4\}, \text{Min}\{L_3, L_3\}, \text{Min}\{L_4, L_3\}, \\ & \text{Min}\{L_4, L_3\}, \text{Min}\{L_5, L_2\}, \text{Min}\{L_5, L_1\} ] = L_3. \end{aligned}$$

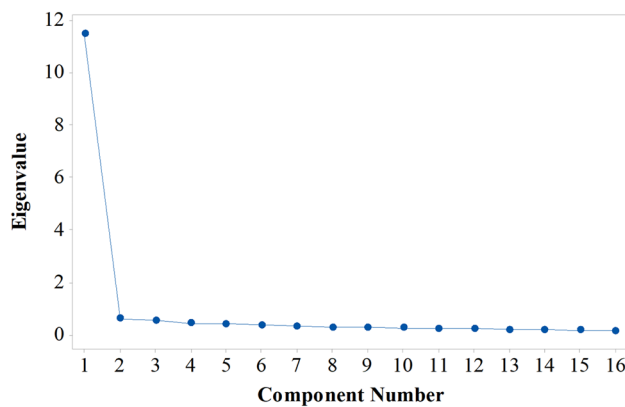
Thus, according to Eq. (9), the experienced complexity at general level of the product ( $EC_j$ ) is  $L_3$ . The OWA calculation can be represented graphically by the intersection of the ‘ascending stair’ (OWA weights) and the ‘descending stair’ (ordered sample elements), as shown in Fig. 8 (Franceschini et al. 2005).

### Additional results on the experimental case study

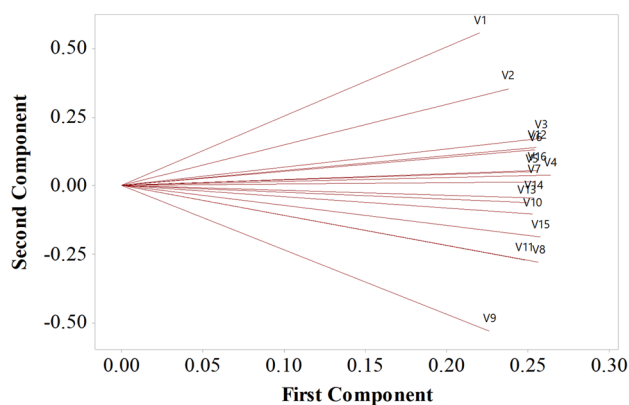
See Table 12 and Figs. 9 and 10.

**Table 12** Spearman rank-order correlation coefficients between the agreement assessments of the 16 complexity criteria of manual assembly, described in Table 3

	V1	V2	V3	V4	V5	V6	V7	V8	V9	V10	V11	V12	V13	V14	V15	V16
V1																
V2	0.620															
V3	0.649	0.706														
V4	0.639	0.713	0.776													
V5	0.636	0.648	0.774	0.777												
V6	0.619	0.698	0.760	0.780	0.683											
V7	0.598	0.657	0.734	0.777	0.740	0.763										
V8	0.603	0.629	0.726	0.763	0.738	0.684	0.716									
V9	0.477	0.581	0.627	0.664	0.632	0.620	0.598	0.700								
V10	0.595	0.670	0.750	0.735	0.706	0.672	0.675	0.750	0.643							
V11	0.563	0.609	0.698	0.728	0.651	0.684	0.648	0.768	0.643	0.753						
V12	0.636	0.719	0.741	0.761	0.688	0.732	0.683	0.718	0.596	0.777	0.749					
V13	0.602	0.640	0.719	0.706	0.718	0.729	0.736	0.714	0.620	0.689	0.677	0.694				
V14	0.630	0.650	0.701	0.746	0.684	0.742	0.705	0.730	0.622	0.740	0.725	0.732	0.696			
V15	0.610	0.631	0.701	0.765	0.739	0.730	0.815	0.750	0.678	0.694	0.694	0.686	0.796	0.744		
V16	0.615	0.699	0.739	0.765	0.678	0.736	0.730	0.703	0.625	0.729	0.718	0.751	0.696	0.749	0.732	



**Fig. 9** Scree plot displaying the number of the principal component versus its corresponding eigenvalue (Johnson and Wichern 2014)



**Fig. 10** Loading plot showing the coefficient of each variable for the first two components (Johnson and Wichern 2014)

**Acknowledgements** The authors gratefully acknowledge Elena Martorana, Giammarco Arcieri and Stefano Puttero for the fruitful collaboration on this project.

**Author contributions** Elisa Verna conceived and designed the analysis, collected the data, performed the analysis, and wrote the paper. Gianfranco Genta conceived and designed the analysis, and verified the analytical methods. Maurizio Galetto conceived of the presented idea, designed the analysis and supervised the findings of this work. All authors discussed the results, and contributed to and reviewed the final manuscript.

**Funding** Open access funding provided by Politecnico di Torino within the CRUI-CARE Agreement. This work has been partially supported by the “Italian Ministry of Education, University and Research”, Award “TESUN-83486178370409 finanziamento dipartimenti di eccellenza CAP. 1694 TIT. 232 ART. 6”.

**Data availability** The datasets generated during and/or analysed during the current study are available from the corresponding author on reasonable request.

## Declarations

**Competing interests** The authors declare no competing interests.

**Open Access** This article is licensed under a Creative Commons Attribution 4.0 International License, which permits use, sharing, adaptation, distribution and reproduction in any medium or format, as long as you give appropriate credit to the original author(s) and the source, provide a link to the Creative Commons licence, and indicate if changes were made. The images or other third party material in this article are included in the article's Creative Commons licence, unless indicated otherwise in a credit line to the material. If material is not included in the article's Creative Commons licence and your intended use is not permitted by statutory regulation or exceeds the permitted use, you will need to obtain permission directly from the copyright holder. To view a copy of this licence, visit <http://creativecommons.org/licenses/by/4.0/>.

## References

- Agresti A (2003) Categorical data analysis. Wiley, London
- Alkan B (2019) An experimental investigation on the relationship between perceived assembly complexity and product design complexity. *Int J Interact Des Manuf* 13:1145–1157
- Alkan B, Harrison R (2019) A virtual engineering based approach to verify structural complexity of component-based automation systems in early design phase. *J Manuf Syst* 53:18–31
- Alkan B, Vera D, Ahmad M et al (2016) A lightweight approach for human factor assessment in virtual assembly designs: an evaluation model for postural risk and metabolic workload. *Procedia CIRP* 44:26–31
- Alkan B, Vera D, Ahmad B, Harrison R (2017) A method to assess assembly complexity of industrial products in early design phase. *IEEE Access* 6:989–999
- Alkan B, Vera DA, Ahmad M et al (2018) Complexity in manufacturing systems and its measures: a literature review. *Eur J Ind Eng* 12:116–150
- Ameri F, Summers JD, Mocko GM, Porter M (2008) Engineering design complexity: an investigation of methods and measures. *Res Eng Des* 19:161–179
- Baccarini D (1996) The concept of project complexity—a review. *Int J Proj Manag* 14:201–204
- Barravecchia F, Franceschini F, Mastrogiacomo L (2018) A service network perspective to evaluate service matching in early design. *J Serv Theory Pract* 28:356–383
- Bedny GZ, Karwowski W, Bedny IS (2012) Complexity evaluation of computer-based tasks. *Int J Hum Comput Interact* 28:236–257
- Boothroyd G, Altling L (1992) Design for assembly and disassembly. *CIRP Ann* 41:625–636
- Brown TM, Miller CE (2000) Communication networks in task-performing groups: effects of task complexity, time pressure, and interpersonal dominance. *Small Gr Res* 31:131–157
- Byström K (1999) Task complexity, information types and information sources: examination of relationships. Faculty of Social Sciences of the University of Tampere, Tampere University Press, London
- Byström K, Järvelin K (1995) Task complexity affects information seeking and use. *Inf Process Manag* 31:191–213
- Bystrom K-E, Barfield W (1999) Collaborative task performance for learning using a virtual environment. *Presence* 8:435–448
- Chan V, Salustri FA (2003) DFA: the Lucas method. Ryerson University, Toronto
- Chrysosolouris G, Giannelos N, Papakostas N, Mourtzis D (2004) Chaos theory in production scheduling. *CIRP Ann* 53:381–383



- Cummings ML, Sasangohar F, Thornburg KM et al (2010) Human-system interface complexity and opacity part I: literature review. Massachusetts Inst Technol, Cambridge
- De Toni AF, Nardini A, Nonino F, Zanutto G (2001) Complexity measures in manufacturing systems. In: Proceedings of the European conference on complex systems, Paris, France, pp 14–18
- Donner R, Scholz-Reiter B, Hinrichs U (2008) Nonlinear characterization of the performance of production and logistics networks. *J Manuf Syst* 27:84–99
- Efthymiou K, Mourtzis D, Pagoropoulos A et al (2016) Manufacturing systems complexity analysis methods review. *Int J Comput Integr Manuf* 29:1025–1044
- ElMaraghy WH, Urbanic RJ (2004) Assessment of manufacturing operational complexity. *CIRP Ann* 53:401–406
- ElMaraghy W, ElMaraghy H, Tomiyama T, Monostori L (2012) Complexity in engineering design and manufacturing. *CIRP Ann* 61:793–814
- ElMaraghy H, AlGeddawy T, Samy SN, Espinoza V (2014) A model for assessing the layout structural complexity of manufacturing systems. *J Manuf Syst* 33:51–64
- Falck A-C, Rosenqvist M (2014) A model for calculation of the costs of poor assembly ergonomics (part 1). *Int J Ind Ergon* 44:140–147
- Falck A-C, Örtengren R, Rosenqvist M, Söderberg R (2016) Criteria for assessment of basic manual assembly complexity. *Proc CIRP* 44:424–428
- Falck A-C, Örtengren R, Rosenqvist M, Söderberg R (2017a) Proactive assessment of basic complexity in manual assembly: development of a tool to predict and control operator-induced quality errors. *Int J Prod Res* 55:4248–4260
- Falck A-C, Örtengren R, Rosenqvist M, Söderberg R (2017b) Basic complexity criteria and their impact on manual assembly quality in actual production. *Int J Ind Ergon* 58:117–128
- Falck A-C, Örtengren R, Rosenqvist M (2012) Relationship between complexity in manual assembly work, ergonomics and assembly quality. In: Ergonomics for sustainability and growth, NES 2012 (Nordiska Ergonomisällskapet) konferens, Saltsjöbaden, Stockholm, 19–22 Aug 2012
- Filev D, Yager RR (1994) Essentials of fuzzy modeling and control. *Sigart Bull* 6:22–23
- Franceschini F, Galetto M (2001) A new approach for evaluation of risk priorities of failure modes in FMEA. *Int J Prod Res* 39:2991–3002
- Franceschini F, Rossetto S (2002) QFD: an interactive algorithm for the prioritization of product's technical design characteristics. *Integr Manuf Syst* 13:69–75
- Franceschini F, Rossetto S (2007) Design for quality: selecting a product's technical features. *Qual Eng* 9:681–688. <https://doi.org/10.1080/08982119708919090>
- Franceschini F, Galetto M, Varetto M (2004) Qualitative ordinal scales: the concept of ordinal range. *Qual Eng* 16:515–524
- Franceschini F, Galetto M, Varetto M (2005) Ordered samples control charts for ordinal variables. *Qual Reliab Eng Int* 21:177–195
- Franceschini F, Galetto M, Maisano D (2007) Management by measurement: designing key indicators and performance measurement systems. Springer, London
- Franceschini F, Galetto M, Maisano D (2019) Designing performance measurement systems. Springer, Cham
- Galetto M, Verna E, Genta G, Franceschini F (2020) Uncertainty evaluation in the prediction of defects and costs for quality inspection planning in low-volume productions. *Int J Adv Manuf Technol* 108:3793–3805
- Gervasi R, Aliev K, Luca M, Franceschini F (2022) User experience and physiological response in human–robot collaboration: a preliminary investigation. *J Intell Robot Syst* 106:1–30. <https://doi.org/10.1007/S10846-022-01744-8>
- Gonzalez C, Vanyukov P, Martin MK (2005) The use of microworlds to study dynamic decision making. *Comput Human Behav* 21:273–286
- Greitzer FL (2005) Toward the development of cognitive task difficulty metrics to support intelligence analysis research. In: 4th IEEE conference on cognitive informatics, 2005 (ICCI 2005). 8–10 Aug 2005, Irvine, CA, USA. IEEE, Irvine, pp 315–320
- Ham D-H, Park J, Jung W (2012) Model-based identification and use of task complexity factors of human integrated systems. *Reliab Eng Syst Saf* 100:33–47
- Hinckley CM (1994) A global conformance quality model. A new strategic tool for minimizing defects caused by variation, error, and complexity. PhD dissertation, Mechanical Engineering Department, Stanford University
- Hückel E (1932) Quantentheoretische Beiträge zum problem der aromatischen und ungesättigten Verbindungen. III Zeitschrift Für Phys 76:628–648
- Johnson RA, Wichern DW (2014) Applied multivariate statistical analysis. Pearson, London
- Lee T-S (2003) Complexity theory in axiomatic design. PhD dissertation, Department of Mechanical Engineering, Massachusetts Institute of Technology
- Li K, Wieringa PA (2000) Understanding perceived complexity in human supervisory control. *Cogn Technol Work* 2:75–88
- Li X, Shi Y, Gutman I (2012) Hyperenergetic and equienergetic graphs. Graph energy. Springer, New York, pp 193–201
- Liu P, Li Z (2012) Task complexity: a review and conceptualization framework. *Int J Ind Ergon* 42:553–568
- Massotte P (1996) Behavioural analysis of a complex system. *Int J Adv Manuf Technol* 12:66–76
- Mattsson S (2013) What is perceived as complex in final assembly? PhD dissertation, Department of Product and Production Development, Chalmers University of Technology
- Maynard DC, Hakel MD (1997) Effects of objective and subjective task complexity on performance. *Hum Perform* 10:303–330
- McCullagh P (1980) Regression models for ordinal data. *J R Stat Soc Ser B* 42:109–127
- Miyakawa S (1986) The hitachi assemblability evaluation method (AEM). In: Proceedings of 1st international conference on product design for assembly
- Montgomery DC, Runger GC, Hubele NF (2009) Engineering statistics. Hoboken, New York
- Nikiforov V (2007) The energy of graphs and matrices. *J Math Anal Appl* 326:1472–1475
- Noor-E-Alam M, Lipi TF, Hasin MAA, Ullah AMMS (2011) Algorithms for fuzzy multi expert multi criteria decision making (MEMCDM). *Knowl Based Syst* 24:367–377
- Park J (2009) Complexity of proceduralized tasks. In: The complexity of proceduralized tasks. Springer Series in Reliability Engineering. Springer, London. [https://doi.org/10.1007/978-1-84882-791-2\\_2](https://doi.org/10.1007/978-1-84882-791-2_2)
- Powers D, Xie Y (2008) Statistical methods for categorical data analysis. Emerald Group Publishing, New York
- Richardson M, Jones G, Torrance M, Baguley T (2006) Identifying the task variables that predict object assembly difficulty. *Hum Fact* 48:511–525
- Rothrock L, Harvey CM, Burns J (2005) A theoretical framework and quantitative architecture to assess team task complexity in dynamic environments. *Theor Issues Ergon Sci* 6:157–171

- Rouse WB, Rouse SH (1979) Measures of complexity of fault diagnosis tasks. *IEEE Trans Syst Man Cybern* 9:720–727. <https://doi.org/10.1109/TSMC.1979.4310112>
- Saaty TL (2008) Decision making with the analytic hierarchy process. *Int J Serv Sci* 1:83–98
- Samy SN, ElMaraghy H (2010) A model for measuring products assembly complexity. *Int J Comput Integr Manuf* 23:1015–1027
- Samy SN, ElMaraghy H (2012) A model for measuring complexity of automated and hybrid assembly systems. *Int J Adv Manuf Technol* 62:813–833
- Schwab DP, Cummings LL (1976) A theoretical analysis of the impact of task scope on employee performance. *Acad Manag Rev* 1:23–35
- Shannon CE (1948) A mathematical theory of communication. *Bell Syst Tech J* 27:379–423
- Shibata H (2002) Global assembly quality methodology: a new methodology for evaluating assembly complexities in globally distributed manufacturing. PhD dissertation, Mechanical Engineering Department, Stanford University
- Simon HA (1991) The architecture of complexity. *Facet Syst Sci*. [https://doi.org/10.1007/978-1-4899-0718-9\\_31](https://doi.org/10.1007/978-1-4899-0718-9_31)
- Simon HA (1996) The sciences of the artificial. MIT Press, London
- Sinha K, de Weck OL, Onishi M et al (2012) Structural complexity metric for engineered complex systems and its application. In: Gain competitive advantage by managing complexity: proceedings of the 14th international DSM conference Kyoto, Japan, pp 181–194
- Sinha K, Suh ES (2018) Pareto-optimization of complex system architecture for structural complexity and modularity. *Res Eng Des* 29:123–141
- Sinha K (2014) Structural complexity and its implications for design of cyber-physical systems. PhD dissertation, Engineering Systems Division, Massachusetts Institute of Technology
- Stevens SS (1946) On the theory of scales of measurement. *Science* 103:677–680
- Su Q, Liu L, Whitney DE (2010) A systematic study of the prediction model for operator-induced assembly defects based on assembly complexity factors. *IEEE Trans Syst Man Cybern Part A Syst Humans* 40:107–120
- Topi H, Valacich JS, Hoffer JA (2005) The effects of task complexity and time availability limitations on human performance in database query tasks. *Int J Hum Comput Stud* 62:349–379
- Vakkari P (1999) Task complexity, problem structure and information actions: integrating studies on information seeking and retrieval. *Inf Process Manag* 35:819–837
- Verna E, Genta G, Galetto M, Franceschini F (2021a) Defects-per-unit control chart for assembled products based on defect prediction models. *Int J Adv Manuf Technol* 119:2835–2846
- Verna E, Genta G, Galetto M, Franceschini F (2021b) Inspection planning by defect prediction models and inspection strategy maps. *Prod Eng* 15:897–915
- Verna E, Genta G, Galetto M, Franceschini F (2022a) Defect prediction for assembled products: a novel model based on the structural complexity paradigm. *Int J Adv Manuf Technol* 120:3405–3426
- Verna E, Genta G, Galetto M, Franceschini F (2022b) Zero defect manufacturing: a self-adaptive defect prediction model based on assembly complexity. *Int J Comput Int Manuf* 1:1
- Vrabič R, Butala P (2011) Computational mechanics approach to managing complexity in manufacturing systems. *CIRP Ann* 60:503–506
- Wang H, Wang H, Hu SJ (2013) Utilizing variant differentiation to mitigate manufacturing complexity in mixed-model assembly systems. *J Manuf Syst* 32:731–740
- Wang W, Li R, Chen Y et al (2019) Facilitating human–robot collaborative tasks by teaching-learning-collaboration from human demonstrations. *IEEE Trans Autom Sci Eng* 16:640–653. <https://doi.org/10.1109/TASE.2018.2840345>
- Wickens CD, McCarley JS (2019) Applied attention theory. CRC Press, Boca Raton
- Wiendahl H-P, Scheffczyk H (1999) Simulation based analysis of complex production systems with methods of nonlinear dynamics. *CIRP Ann* 48:357–360
- Windt K, Philipp T, Böse F (2008) Complexity cube for the characterization of complex production systems. *Int J Comput Integr Manuf* 21:195–200
- Wood RE (1986) Task complexity: definition of the construct. *Organ Behav Hum Decis Process* 37:60–82
- Yager RR (1993) Non-numeric multi-criteria multi-person decision making. *Gr Decis Negot* 2:81–93
- Yager RR (1995) An approach to ordinal decision making. *Int J Approx Reason* 12:237–261
- Zaeh MF, Wiesbeck M, Stork S, Schubö A (2009) A multi-dimensional measure for determining the complexity of manual assembly operations. *Prod Eng* 3:489
- Zhang Z (2012) Manufacturing complexity and its measurement based on entropy models. *Int J Adv Manuf Technol* 62:867–873
- Zhu X, Hu SJ, Koren Y et al (2007) Sequence planning to minimize complexity in mixed-model assembly lines. In: 2007 IEEE international symposium on assembly and manufacturing. IEEE, New York, pp 251–258

**Publisher's Note** Springer Nature remains neutral with regard to jurisdictional claims in published maps and institutional affiliations.